

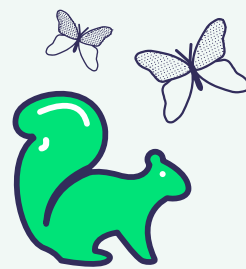
The Northern Forest:

delivering transformational change

Five Year Impact Report
2018 - 2023

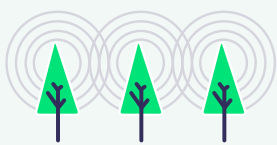
302,000

more households have
access to woodland



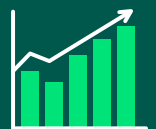
**3,500
hectare**

of new habitat
networks for wildlife



19,000 tonnes

of carbon sequestered each year



£43m

economic uplift
each year



 Humber
Forest

 City
of Trees

 WOODLAND
TRUST

 THE MERSEY
FOREST
more from trees

 White
Rose
Forest

Launched in 2018, the Northern Forest is a programme of ambitious transformation through tree planting. Together, four of England’s northern Community Forests and the Woodland Trust are planting at least fifty million new trees across 10,000 square miles of land, stretching from Liverpool and Chester in the west, to Hull in the east. Those trees will generate £2.5 billion of benefits, felt by 13 million people through Greater Manchester, Leeds and Sheffield, as well as all of Lancashire, Cheshire and Yorkshire, parts of Cumbria, Derbyshire, Nottinghamshire and Lincolnshire.

This evaluation of the benefits already being felt through the Northern Forest Partnership has been carried out by Liverpool John Moores University. It spans the period of March 2018 to Spring 2023.

This analysis focuses on the circa 2.5 million trees that have been planted through woodland creation activity in the Northern Forest geography. There have been around 3.5 million further trees planted by the core partners through other activity (such as the Woodland Trust’s free trees for schools and communities programme) and their value is not captured within the scope of this study.

The ambition of the Northern Forest is unprecedented. But so are the capabilities, capacity and experience of the partners driving it forward. The power of the Northern Forest lies in both its scale and its local sensitivity. The partners’ collective plan enables the Northern Forest to achieve transformation at a massive scale but individually each partner is deeply rooted in their individual communities, and each project that contributes to the Northern Forest vision is delivered to best suit local need.



Over 6 million trees planted...
... and **2.5 million** of those trees planted through new woodland creation

Over 4000 football pitches worth of land now planted, with the right tree, in the right place, for the right reasons

The Northern Forest has already delivered incredible benefits to local people and wildlife across the North of England. It is playing a vital role in the region’s commitments to mitigate the impacts of climate change, address the biodiversity crisis and build stronger, more equitable and healthier communities.

Access to nature

Planting through the Northern Forest means nearly 302,000 more households are now within 500m of a publicly accessible woodland, and nearly one third of these are within the top 10% of most deprived areas in England. But why does this matter so much? The Royal College of Physicians estimates that air pollution causes around 40,000 premature deaths every year. In urban areas airborne pollution comes largely from traffic, and poses a significant health risk, especially to unborn babies and more vulnerable people. Taking trees into the heart of those areas quite simply cleans the air that millions of people breathe. What’s more, they cool the temperature and quieten the noise of city life. And giving everyone easy, free access to nature on their doorstep means a greater chance of them having better physical and mental health.

Contribution to net zero

Trees hold carbon in their biomass and soil, and play an absolutely vital role in supporting the UK’s aim of reaching net zero by 2050. The 2.5 million planted as woodland by the Northern Forest partners will sequester over 19,000 tonnes of additional carbon, every year over their lifetime. That sequestration is valued at more than £1.4 million (based on the non-traded price of carbon).

... our newly planted trees are sequestering an additional **19,000 tonnes** of carbon every year - the equivalent of driving **70 million miles** in a family car.

...**302,000** more households are now within **500m** of a woodland...


Enhancing wildlife

From the tallest tree to the smallest organism, biodiversity encompasses the variety of plant and animal life on our planet. If we lose biodiversity, we lose food, water and fresh air; it is the essential ‘life support’ system that we need. Planting through the Northern Forest partnership has created an additional 3,500 hectares of better connected habitat networks for wildlife, contributing to a total of 570,000 hectares of woodland network that now exists across the Northern Forest. Why does the network matter? The Northern Forest partners take a strategic approach to planting for wildlife and nature recovery. Planting in between existing but unconnected woodland sites acts as a stepping stone for species. They can move through previously unsuitable environments, helping them to thrive.

Achievements made across the Northern Forest area



302,000 extra households are now less than 10 minutes walk away from a publicly accessible woodland



423,626 cubic meters of water storage in locations most likely to reduce flood risk



A potential **7.5 million** more visits to local woodlands each year thanks to Northern Forest planting



Across the sites we’ve planted, we’ve achieved:
33% improvement in flood mitigation
11.6% improvement in air purification



87,500 of households within the most deprived areas are now within 500m of woodland



19,000 tonnes of carbon sequestered each year by trees planted across the Northern Forest area.



3,500 hectares of habitat networks created for local wildlife



The associated annual economic uplift flowing from all of these natural benefits is worth over **£43 million**

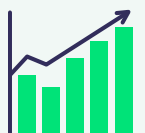
The Northern Forest; proud to be...



delivering a
five fold return
on investment



transforming
a landscape
with some of
the lowest tree
cover in Europe



delivering an
annual economic
uplift of £43
million



Working together, the Woodland Trust, City of Trees (Greater Manchester), White Rose Forest, The Mersey Forest and the Humber Forest are bringing the Northern Forest to life. To find out more visit thenorthernforest.org.uk

For more information regarding the methodologies used to establish the data featured in this report, please contact Colm Bowe at C.Bowe@ljmu.ac.uk



This report has been produced
in partnership with:

